

HOLE # : **N0902**

# **TROYMET EXPLORATION CORP.** **GOLDEN EAGLE PROJECT** **DIAMOND DRILL LOG**

HOLE # : **N0902**

UTM Coordinates NAD 83, Zone 8

Collar Survey Type: **Garmin hand held GPS**Northing : **6642215**Easting : **507731**Elevation (m) : **1360 m**Hole Length : **70.10 m**Azimuth (true) : **120**Dip : **-45**

NTS : 104M/15

Core Size: **NTW**Overburden : **3.0 m.**

Contractor : Kluane Drilling Ltd

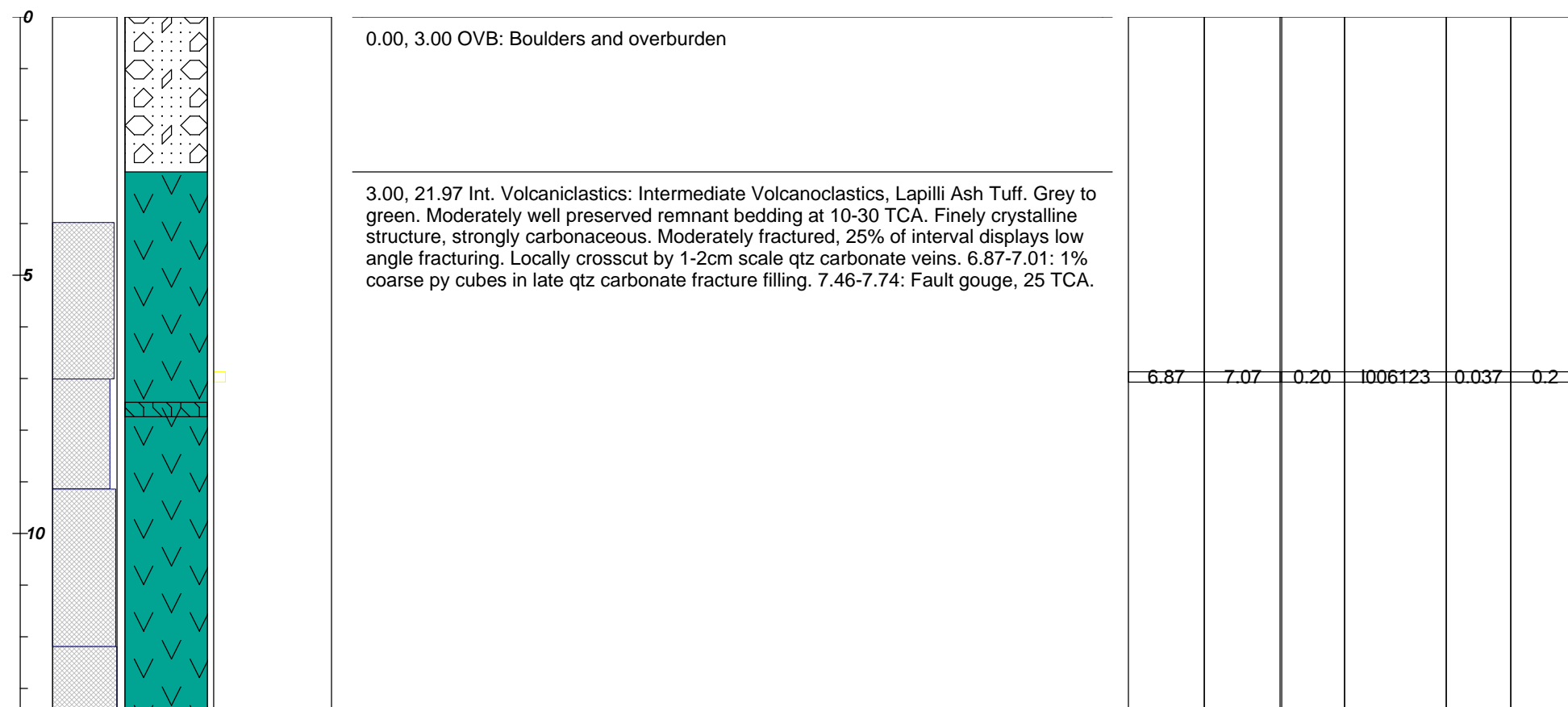
Logged By : **Derek Torgerson**Date Hole Started : **October 9, 2009**Date Hole Completed : **October 10, 2009****Sulphide Mins**

— pyrite  
 — chalcopryite  
 — arsenopyrite

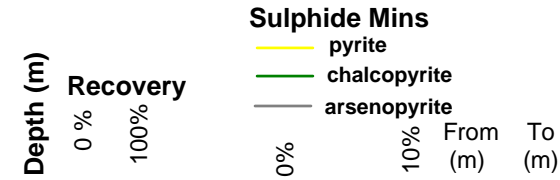
**Recovery**  
 0 % 100%  
 0% 10%  
 From To  
 (m) (m)

**DESCRIPTION**

----- **Sample Data** -----  
 From To Wdth Sample Au Ag  
 (m) (m) (m) (g/t) (g/t)

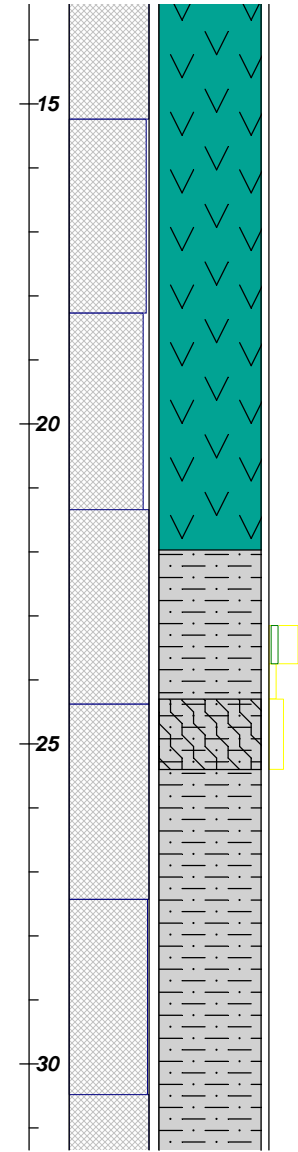


TROYMET EXPLORATION CORP.  
GOLDEN EAGLE PROJECT  
DIAMOND DRILL LOG



DESCRIPTION

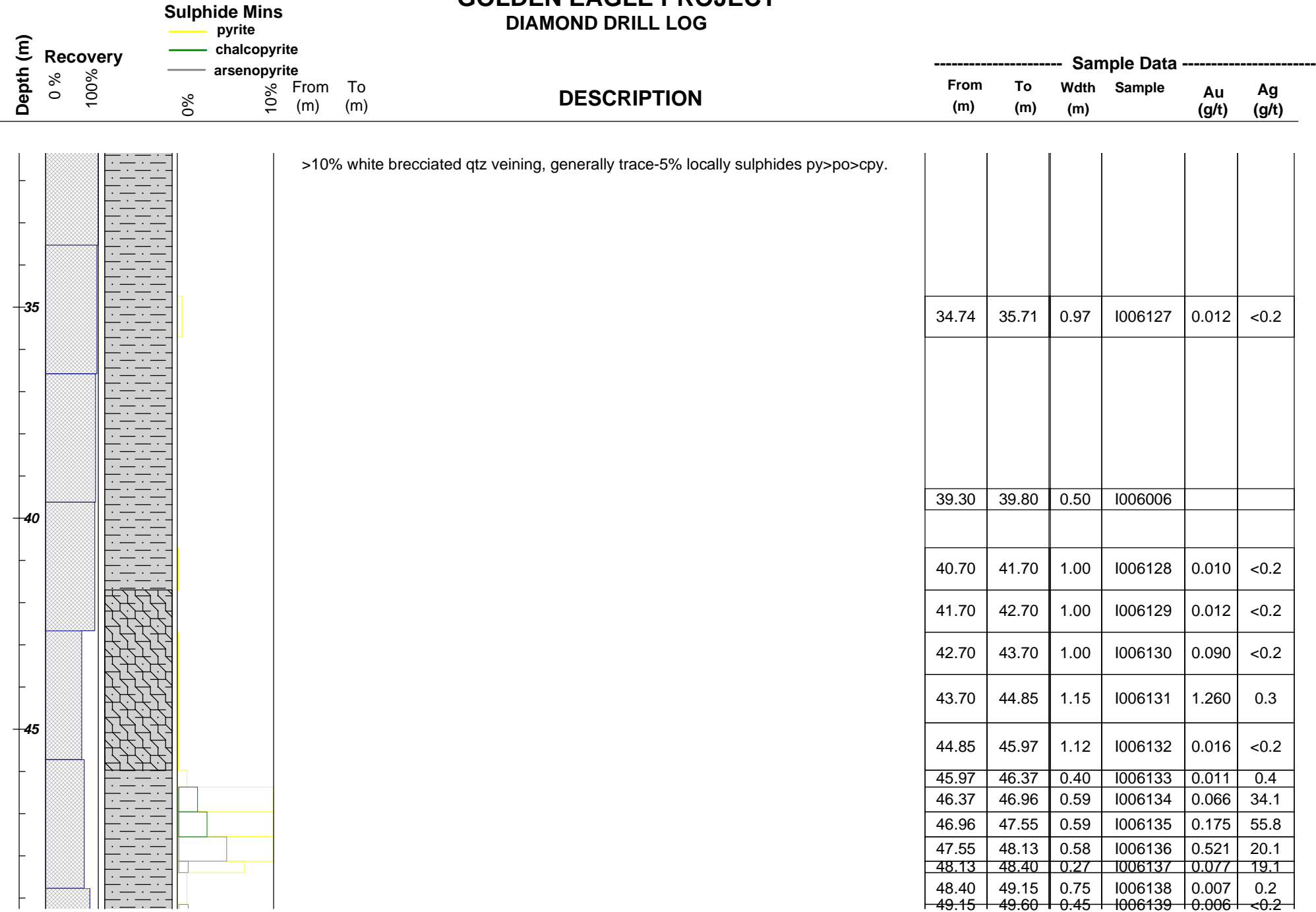
Sample Data					
From (m)	To (m)	Width (m)	Sample	Au (g/t)	Ag (g/t)



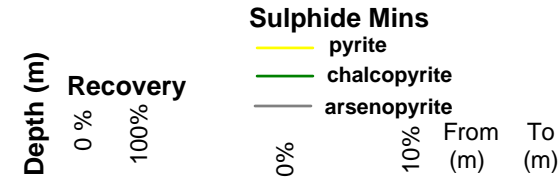
21.97, 70.10 Argillite: Carbonaceous Argillaceous Siltstone. Dark Grey to Black. Very fine grained compact structure. Locally moderately well preserved remnant bedding at 45 TCA. Strongly tectonized with >2m scale sections very fractured and shattered, well healed with late white qtz carbonate veins carrying po,py, cpy and rarely aspy. Locally brecciated. More brecciated sections display localized soft sediment deformation. Interval is characterized as a high strain zone with poly phases of ductile and brittle deformation. Downhole (below fault at 41.70) silicification and ductile deformation is more prevalent. Ductile deformation expressed locally as folded and boudinaged qtz carbonate veining. Locally preserved zones of brown biotite alteration and contact metasomatism of bright forest green actinolite. Sulphide mineralization increases downhole with po, py, cp, and instances of aspy. Sections are very bleached and in situ altered to a mottled textured quartzite (?), moderately magnetic containing 1-2% very fine mte. 23.15-23.75: 50-60% qtz carb veining, at parallel to 15 TCA, 2% py, tr cpy on vein selvages. 24.30-25.40: Intensely brecciated and fractured section, well healed with 30% qtz carbonate veining, 1% py. 41.70-45.97: Fault zone, intensely fractured, bleached, sericite altered, milled core; fault gouge at upper contact orientated at 30 TCA. 46.37-48.13: main zone of mineralization, highly brecciated, sheared and silicified; 70-75% white qtz carbonate vein, 25-30% sulphides; 20% py, 3% cpy, 2% aspy; veining has a distinctive gun metal grey tinge and possibly contains additional very fine aspy or bismuthinite. 54.80-70.10: Very disruptive and strained texture, mottled, locally brecciated, boudinaged and curvilinear qtz veins, 15% metasomatic actinolite, very silicified,

15.11	16.11	1.00	I006001		
16.11	17.11	1.00	I006002		
17.11	18.11	1.00	I006003		
18.11	18.63	0.52	I006004		
23.15	23.75	0.60	I006124	0.006	<0.2
23.75	24.30	0.55	I006125	0.037	<0.2
24.30	25.40	1.10	I006126	0.014	<0.2
30.50	31.30	0.80	I006005		

TROYMET EXPLORATION CORP.  
GOLDEN EAGLE PROJECT  
DIAMOND DRILL LOG

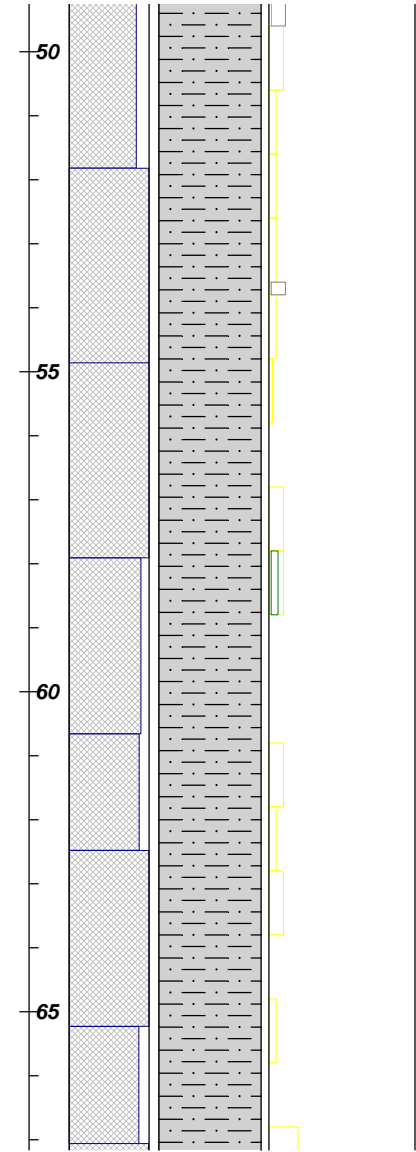


TROYMET EXPLORATION CORP.  
GOLDEN EAGLE PROJECT  
DIAMOND DRILL LOG



DESCRIPTION

Sample Data					
From (m)	To (m)	Width (m)	Sample	Au (g/t)	Ag (g/t)



49.60	50.60	1.00	I006140	0.008	<0.2
50.60	51.60	1.00	I006141	0.009	0.2
51.60	52.60	1.00	I006142	0.010	0.2
52.60	53.60	1.00	I006143	0.007	<0.2
53.60	53.80	0.20	I006144	0.006	<0.2
53.80	54.80	1.00	I006145	0.007	<0.2
54.80	55.80	1.00	I006146	0.007	0.2
55.80	56.80	1.00	I006147	0.005	<0.2
56.80	57.80	1.00	I006148	0.014	0.5
57.80	58.80	1.00	I006151	0.043	2.2
58.80	59.80	1.00	I006152	0.007	<0.2
59.80	60.80	1.00	I006153	0.013	2.4
60.80	61.80	1.00	I006154	0.029	1.7
61.80	62.80	1.00	I006155	0.021	1.7
62.80	63.80	1.00	I006156	0.015	0.5
63.80	64.80	1.00	I006157	0.029	1.0
64.80	65.80	1.00	I006158	0.019	<0.2
65.80	66.80	1.00	I006159	0.017	0.3
66.80	67.80	1.00	I006160	0.012	0.2

**TROYMET EXPLORATION CORP.**  
**GOLDEN EAGLE PROJECT**  
**DIAMOND DRILL LOG**

**Depth (m)**

## Recovery

## Sulphide Mins

— pyrite

— chalcopyrite

— arsenopyrite

0%

10%

From  
(m)

To  
(m)

## DESCRIPTION

